

Ferry Terminal to Frenchman's Rock
 Australian walking track grading system:
Grade 1: No bushwalking experience required. Flat even surface with no steps or steep sections. Suitable for wheelchair users who have someone to assist them. Walks no greater than 5 km.
Grade 2: No bushwalking experience required. The track is a hardened or compacted surface and may have a gentle hill section or sections and occasional steps. Walks no greater than 10 km.

Frenchman's Rock to Cape Willoughby
 Australian walking track grading system: Rest of trail Grade 4 other than Iron Stone Hike Grade 3
Grade 4: Bushwalking experience recommended. Tracks may be long, rough and very steep. Directional signage may be limited

Iron Stone Hike Grade 3
 Harry Bates Cottage and grain threshing floor. Alternative route walk to 2nd grain threshing floor.

Access between Baudin CP and Crown Land west of Cuttlefish Bay to be determined

● 2nd grain threshing floor

1. PENNESHAW **W P** Start 0km



TRAILHEAD CARPARK **T**



HOGS BAY BOARDWALK EXAMPLE **B**



FRENCHMANS ROCK **H T W** 0.8km



2. BAUDIN CP **P W** 1.5km



FOOTWEAR CLEANING STATION **FC**



THRESHER FLOOR **H T W L**

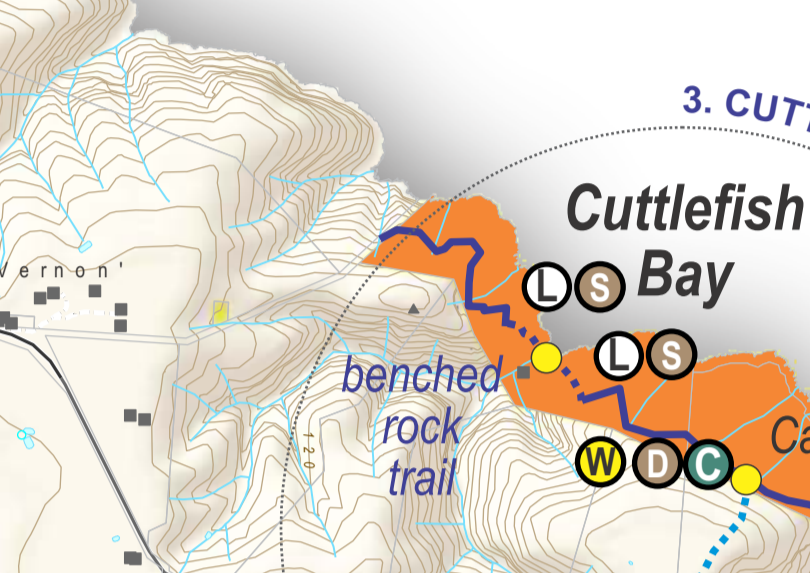


FENCE CROSSING EXAMPLE **F** 4km

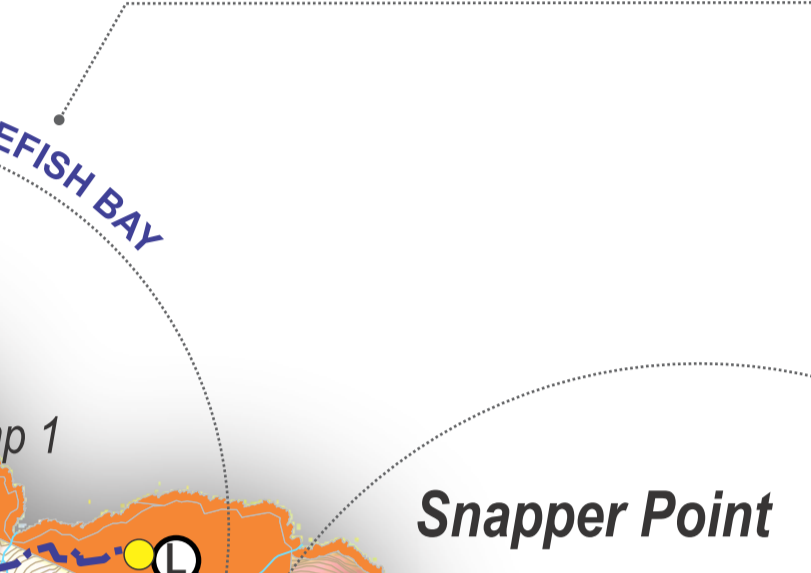


Backstairs Passage

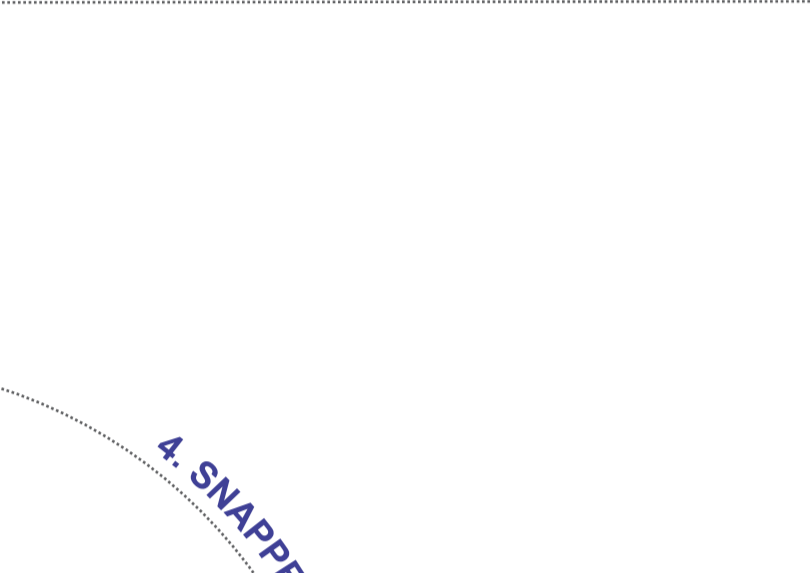
3. CUTTLEFISH BAY **L W** 11km



CAMP 1 **C D** 11.5km



DUDLEY WINES **P L** 12km



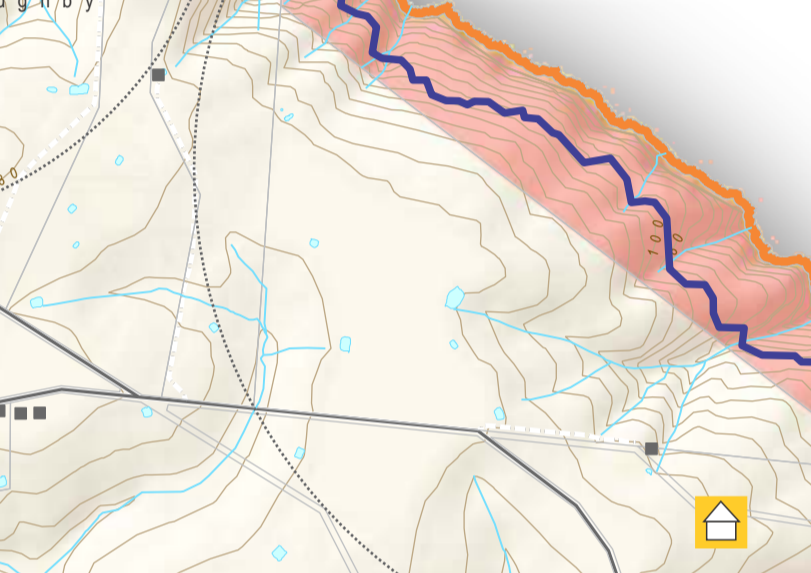
PASSAGE LOOKOUT **L S** 12.7km



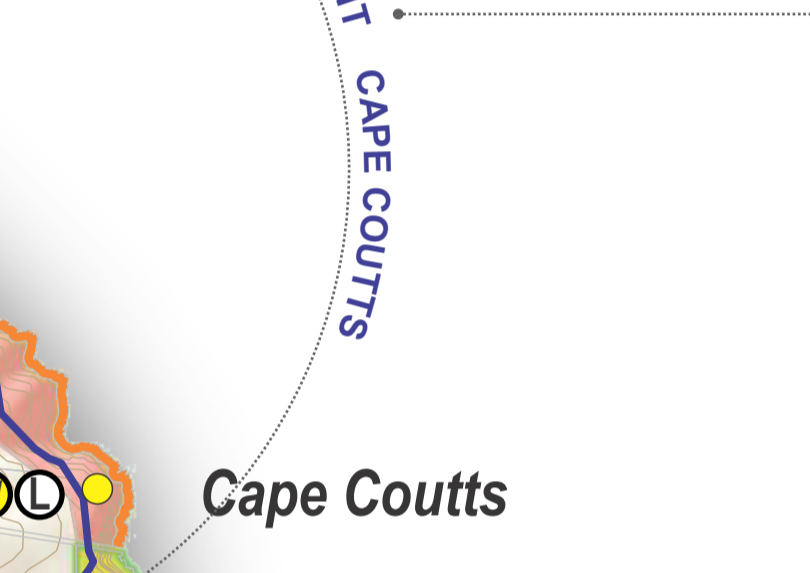
LOOKOUT STONE SEAT **S**



CAPE COUTTS **L W** 14km



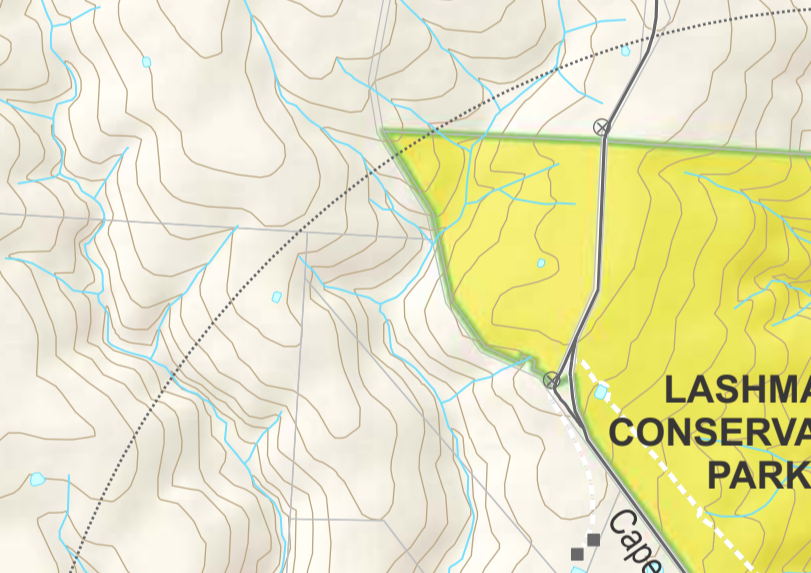
LOOKOUT VIEWING AREA EXAMPLE



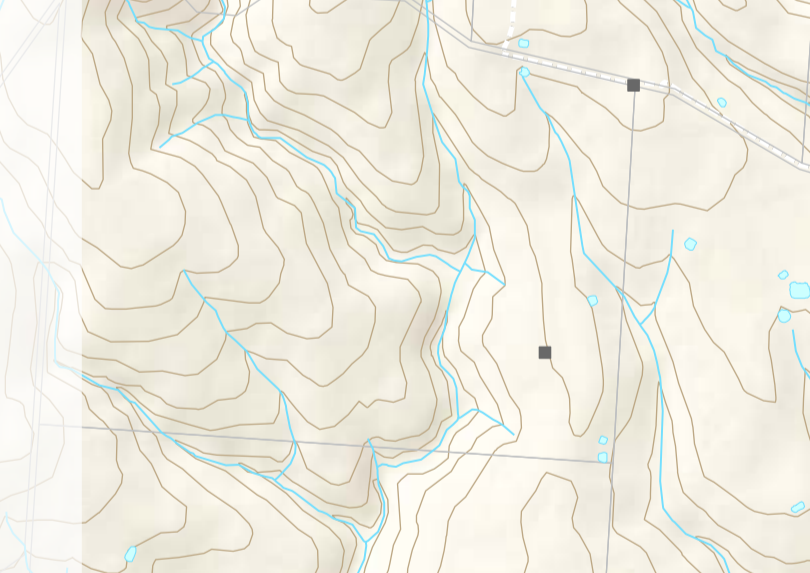
CAMP 2 **C D W** 15.5km



5. CHAPMAN RIVER **P W** 16km



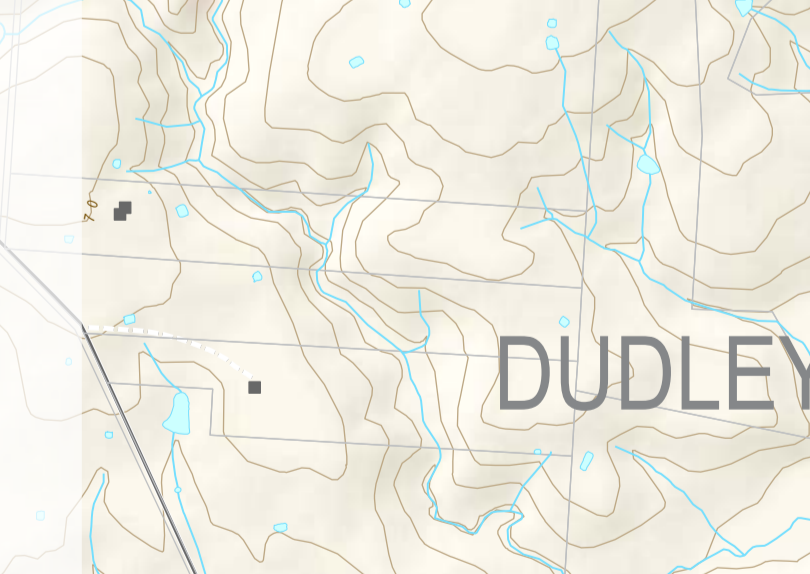
LASHMAR LAGOON 17.5km



ANTECHAMBER BAY BEACH WALK



7. CAPE WILLOUGHBY **T P FC T W** Trail finish 37km



CAPE WILLOUGHBY CONSERVATION PARK



THE DUDLEY WALK

- Trail Locations / Features
- 🏠 Alternative Accommodation
- P Vehicle Parking

Earth / Rock Trail

- Dudley Walk Trail
- Benched Rock Trail
- Rock Step Trail
- Future Trail Option for Review
- Existing Trail Connections
- Trail Access Options for Review
- Future Loop Trail Option for DEW Review
- Future Class 1 Access from Trailhead to Lighthouse for DEW Review

Built Infrastructure

- ⊙ Boardwalk
- ⊙ Lookouts - earth / boulder / stone / stile platform
- ⊙ Fence Crossing - Steel Ladder Stile
- ⊙ Camping Area
- ⊙ Stone Seats
- ⊙ Raised Sleeping Decks
- ⊙ Footwear Cleaning Station

Signage

- T Trailhead
- I Interpretation
- H Historical / Cultural Site
- W Wayfinding

Existing

- Road
- Local Reserve (KI Council)
- Recreation Reserve (KI Council)
- Built Up Area
- Private Land
- Building, Ruin, Gate
- ★ Lighthouse
- Land owned by Minister for Environment & Conservation
- Unalienated Crown Land
- Land held under Crown Leaseholds

STONE SEAT REST AREA



STONE STEPS EXAMPLE



BENCH TRAIL EXAMPLE



SHELTER EXAMPLE



THE DUDLEY WALK MASTERPLAN

THE DUDLEY WALK

- Trail Locations / Features
- Alternative Accommodation
- Vehicle Parking

Earth / Rock Trail

- Dudley Walk Trail
- Benched Rock Trail
- Rock Step Trail
- Future Trail Option for Review
- Existing Trail Connections
- Trail Access Options for Review
- Future Loop Trail Option for DEW Review
- Future Class 1 Access from Trailhead to Lighthouse for DEW Review

Built Infrastructure

- Boardwalk
- Lookouts - earth / boulder / stone / stile platform
- Fence Crossing - Steel Ladder Stile
- Camping Area
- Stone Seats
- Raised Sleeping Decks
- Footwear Cleaning Station

Signage

- Trailhead
- Interpretation
- Historical / Cultural Site
- Wayfinding

Existing

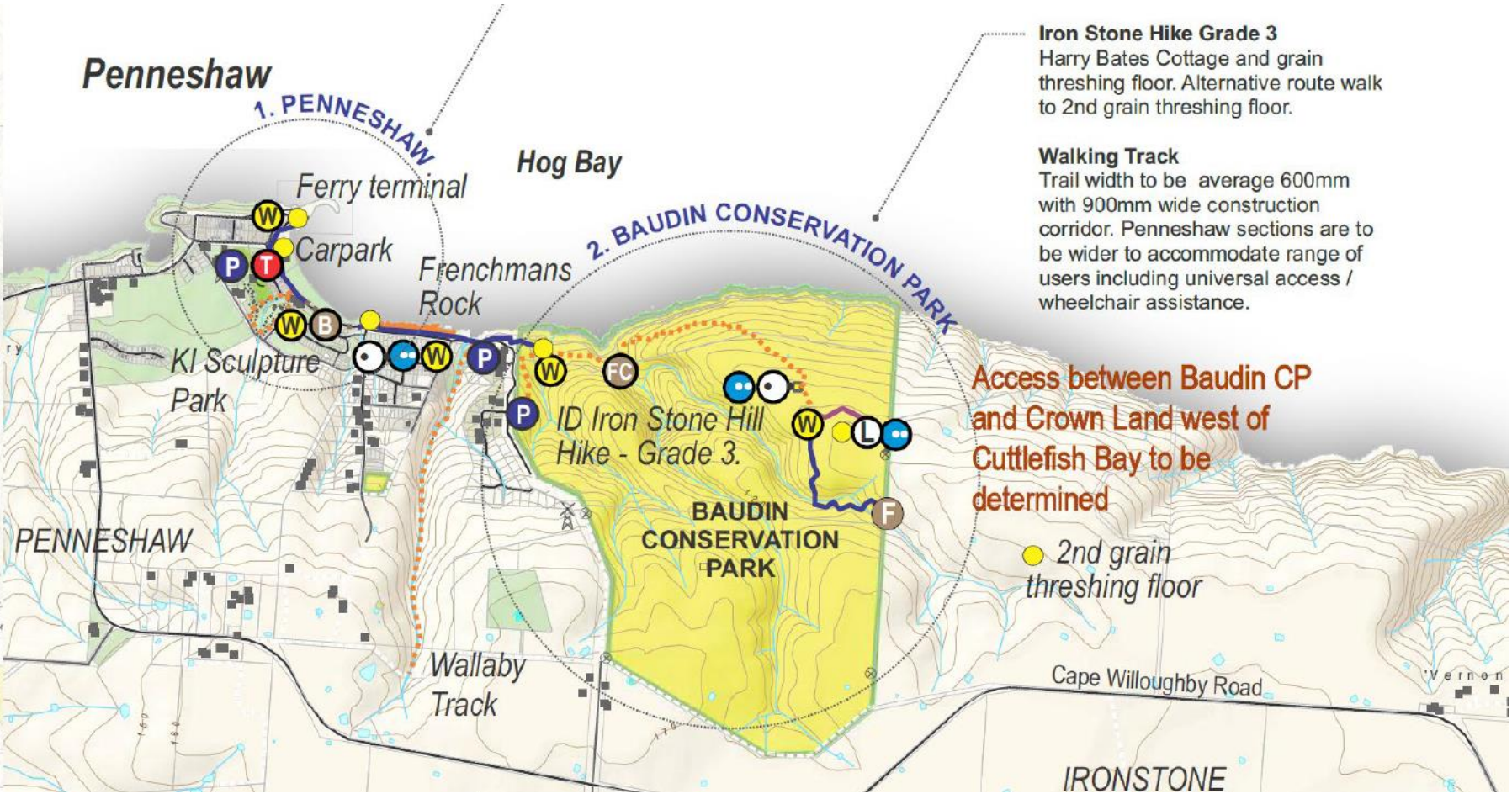
- Road
- Local Reserve (KI Council)
- Recreation Reserve (KI Council)
- Built Up Area
- Cadastre
- Building, Ruin, Gate
- Lighthouse

Land Ownership

- Land owned by Minister for Environment & Conservation
- Unalienated Crown Land
- Land held under Crown Leaseholds

TRC TOURISM RECREATION CONSERVATION

1:25,000 @ A0
Masterplan March 2023



Section 3 & 4 Cuttlefish Bay and Snapper Point/Cape Coutts

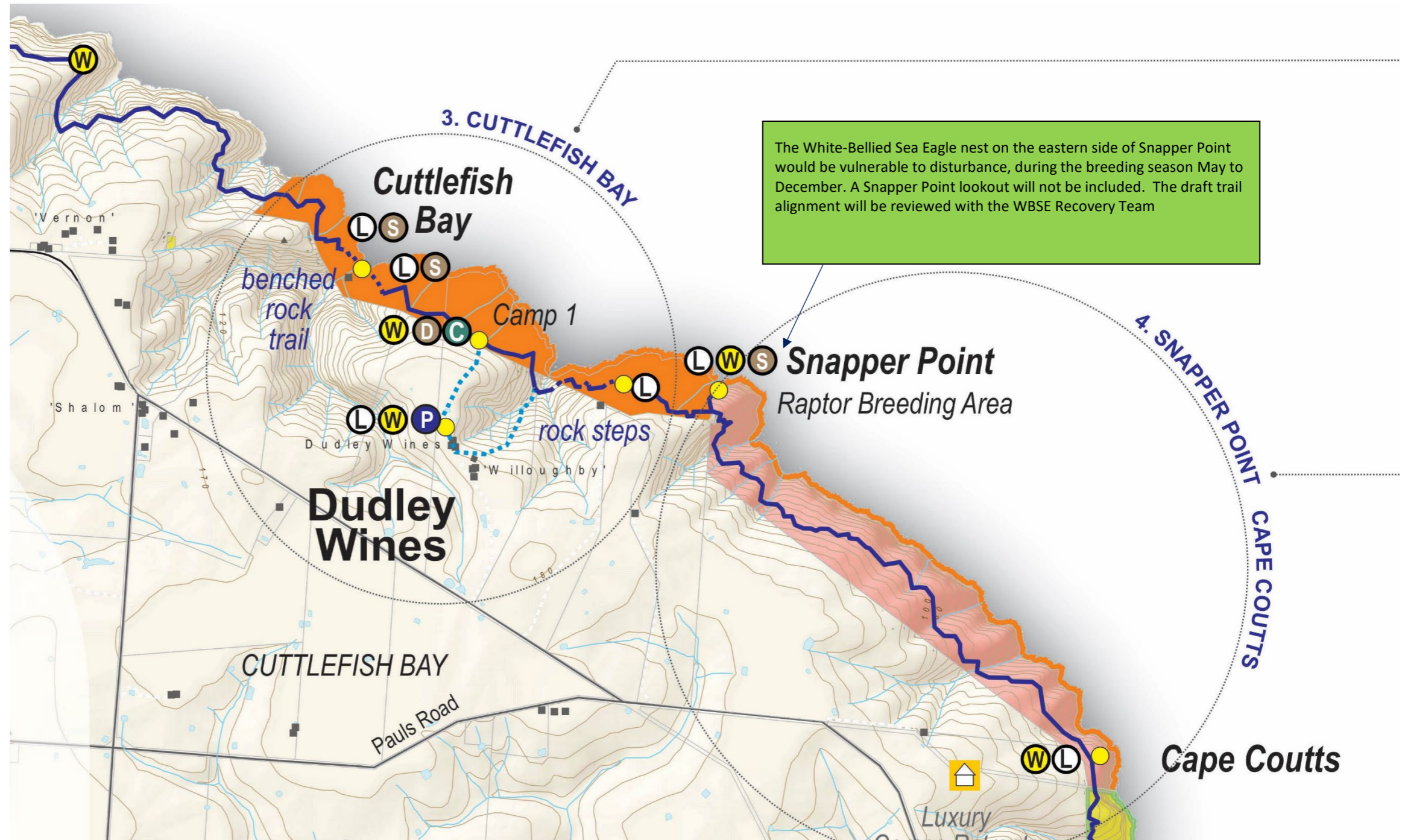
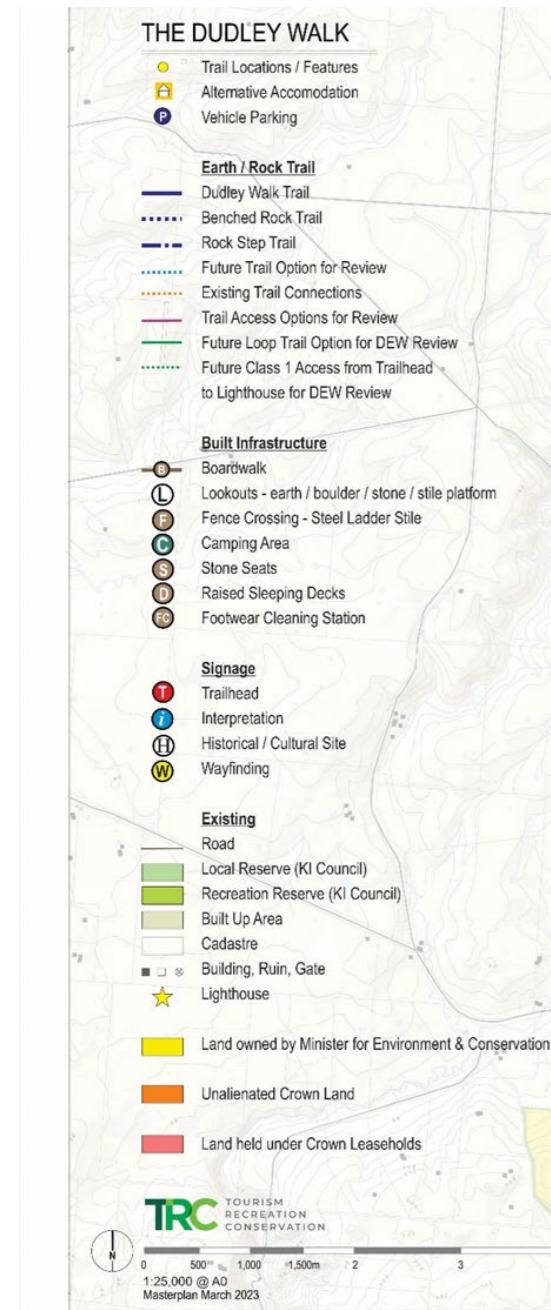
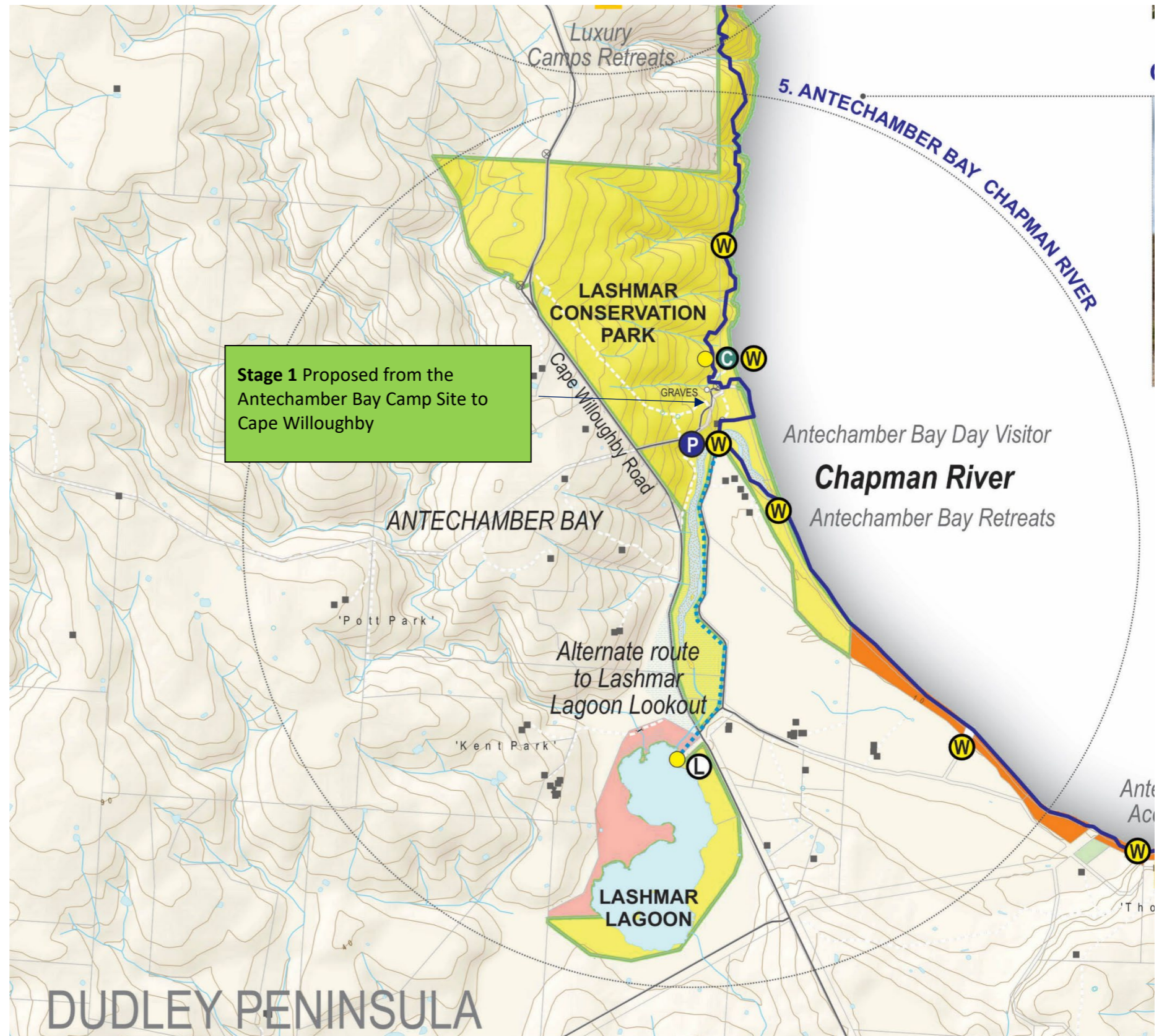
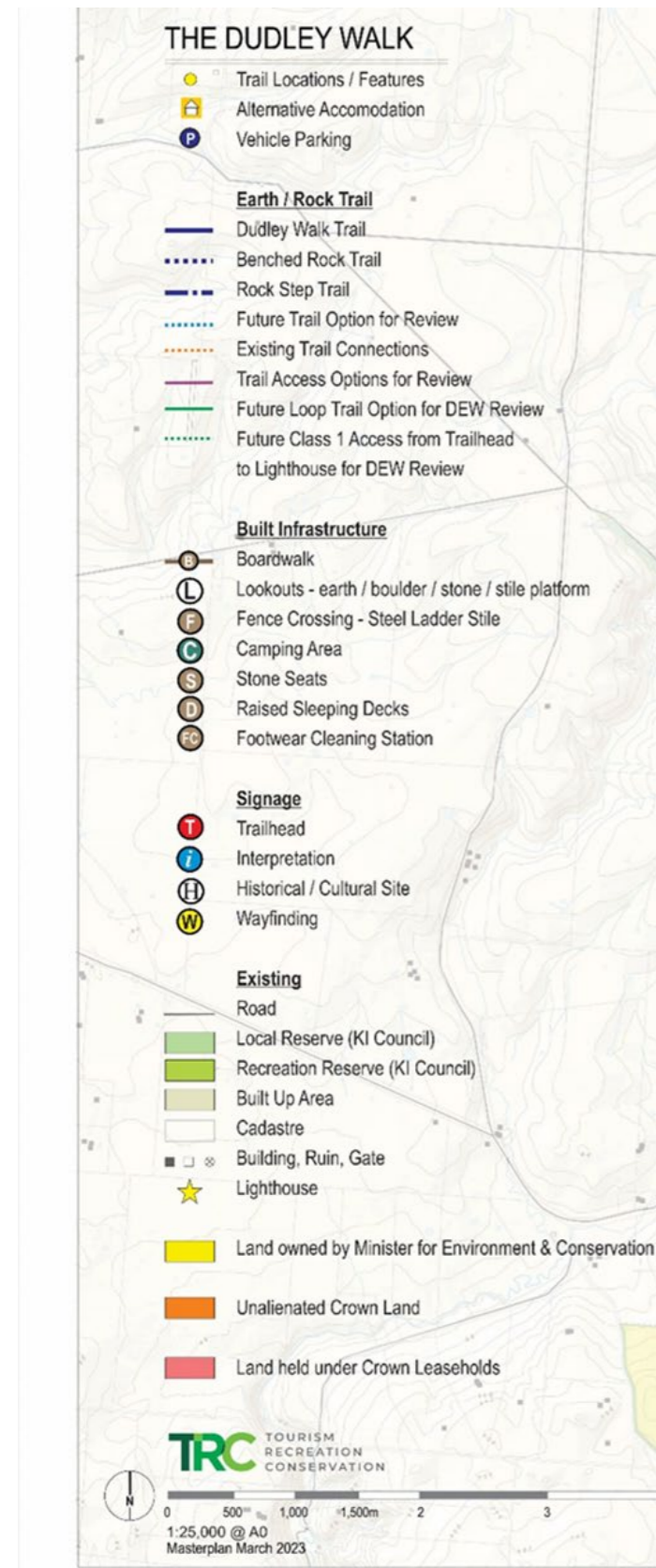
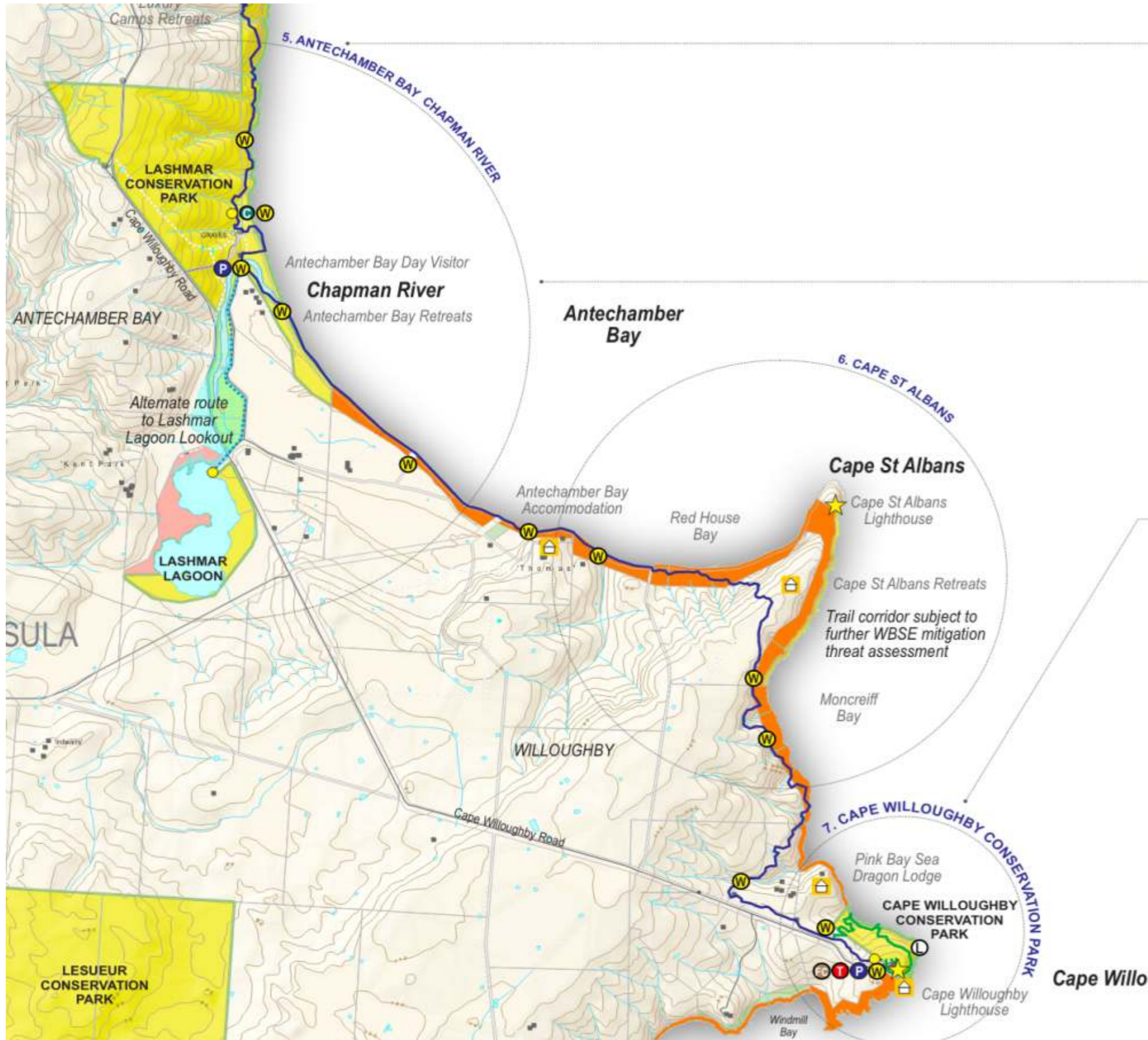
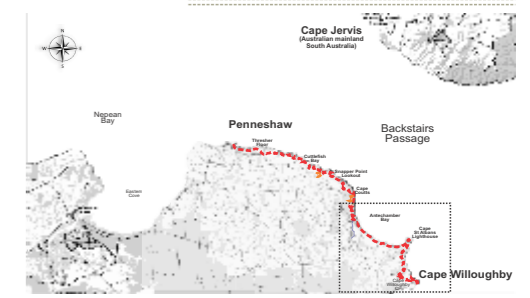


Figure 3. Section 5 Antechamber Bay





CAMP 2 **C D W** 15.5km



5. CHAPMAN RIVER **P W** 16km



LASHMAR LAGOON 17.5km



ANTECHAMBER BAY BEACH WALK



7. CAPE WILLOUGHBY **T P FC i L W** Trail finish 37km



THE DUDLEY WALK MASTERPLAN

DRAFT
May 2023



Cape Willoughby